



# Softshare ECS<sup>®</sup>

**Electronic Commerce Server**

*Softshare ECS  
moves and integrates  
data across  
your enterprise  
in real time.*

Real-time communications. Real-time data exchange.  
Real-time integration. Combine these powerful capabilities  
into one software application and you have an incredibly  
sophisticated electronic commerce server, Softshare ECS.

Softshare ECS supports today's prevalent Internet  
communications protocols, moving data into, out of, and  
across your enterprise in real time. In addition, ECS'  
advanced event rule system ensures that data is processed  
and routed according to its unique properties.

The result of ECS' real-time, hands-off data handling  
capabilities is seamless management of all your electronic  
commerce operations!

**Softshare ECS.** Coming at You in Real Time.

## Fluid Data Movement

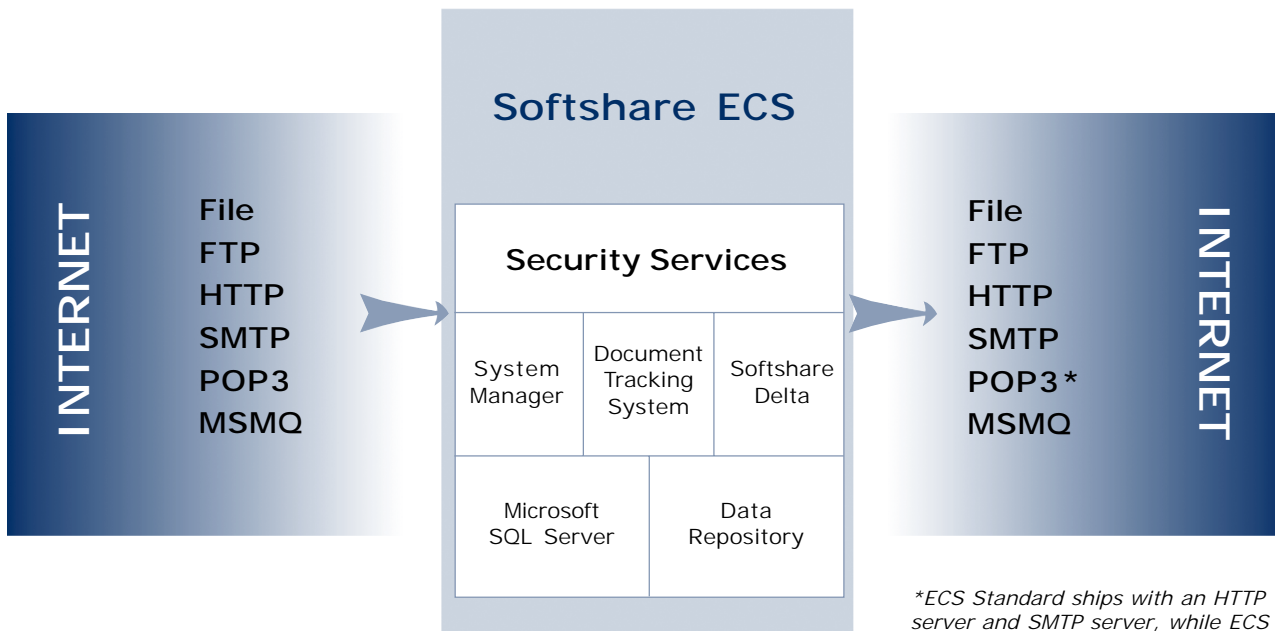
Softshare ECS is ideal for companies with high transaction volumes that require data reliability and security. ECS enables you to communicate with your trading partners using today's prevalent Internet communications protocols. Using the ECS Management Console utility, you can configure data to flow into and out of your enterprise using a variety of transfer methods including File Transfer Protocol (FTP), Hypertext Transfer protocol (HTTP), Post Office Protocol Version 3 (POP3), and Simple Mail Transfer Protocol (SMTP). Several other data transfer methods such as file system and Microsoft Message Queuing (MSMQ) are also supported by ECS for the retrieval and delivery of data.

In addition to supporting various communications protocols, ECS supports three widely used forms of data security: EDI-INT AS1, AS2, and AS3. ECS also has built-in support for secure FTP and secure HTTP using SSL/TLS. Whether you need to communicate via a Value-Added Network (VAN) or directly over the Internet using AS2, ECS will meet all your communications and security requirements.

### Transfer Methods

- File System
- FTP and FTPS
- HTTP and HTTPS
- POP3
- SMTP
- MSMQ
- Printer
- User-Defined

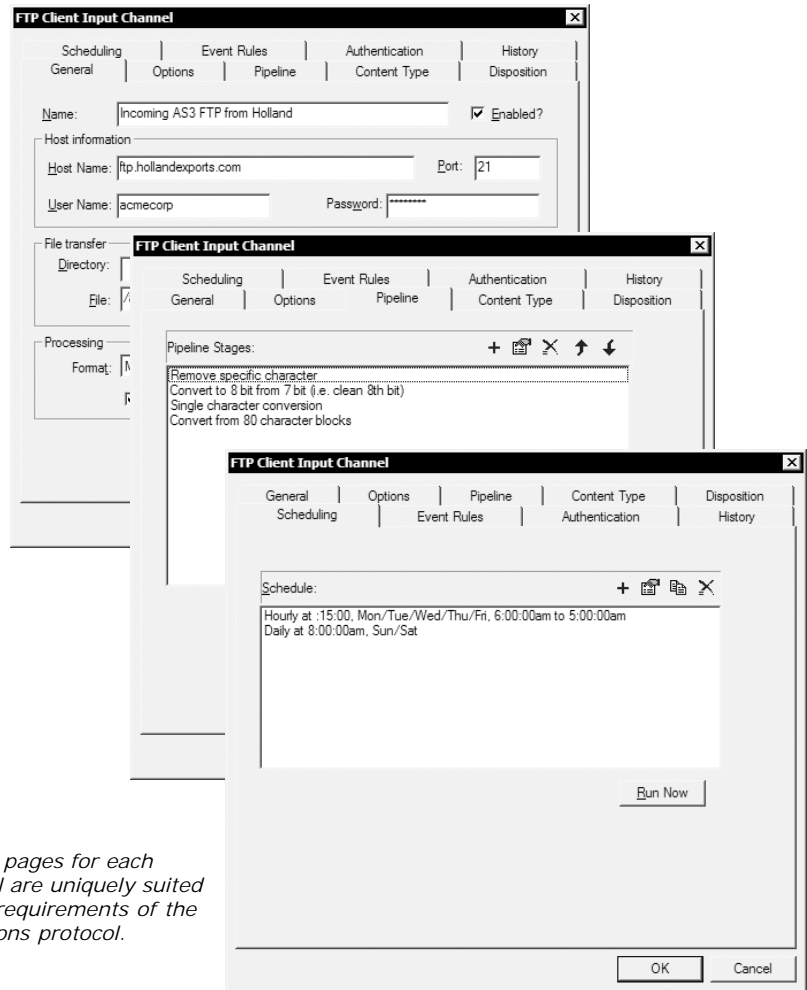
## Softshare ECS Architecture



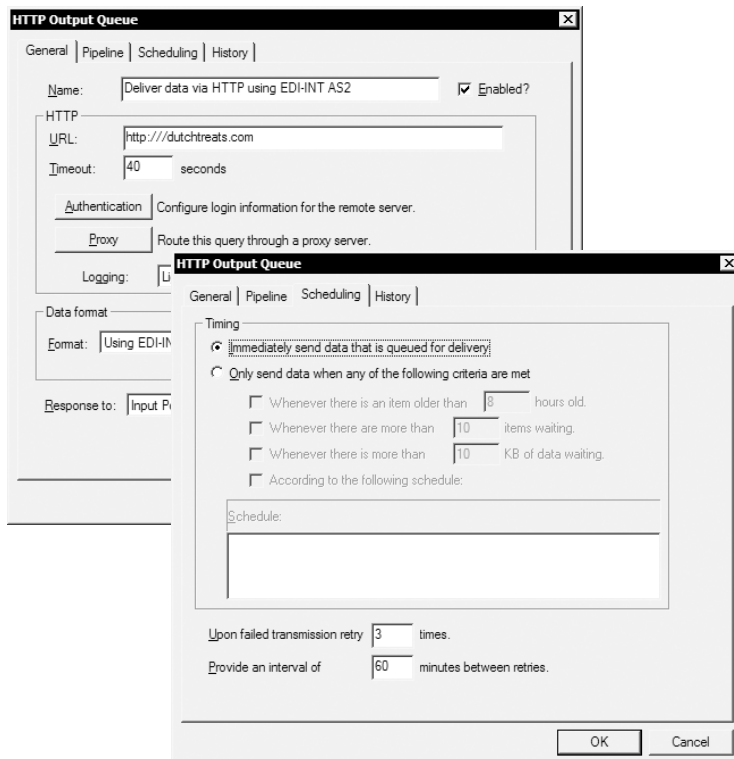
## Input Channels

Input channels determine where, when, and how Softshare ECS retrieves data. Within the Management Console, you can configure as many input channels as necessary for your business operations. Helpful user folders let you organize the channels by business process.

Each input channel type has several property pages where you can set basic and advanced parameters for the retrieval and processing of data. These parameters include where and how often ECS retrieves data, whether duplicate data should be processed, what data conversions should take place (for example, switching from ASCII to EBCDIC characters), and the actions that will be performed on arriving data, to name a few.



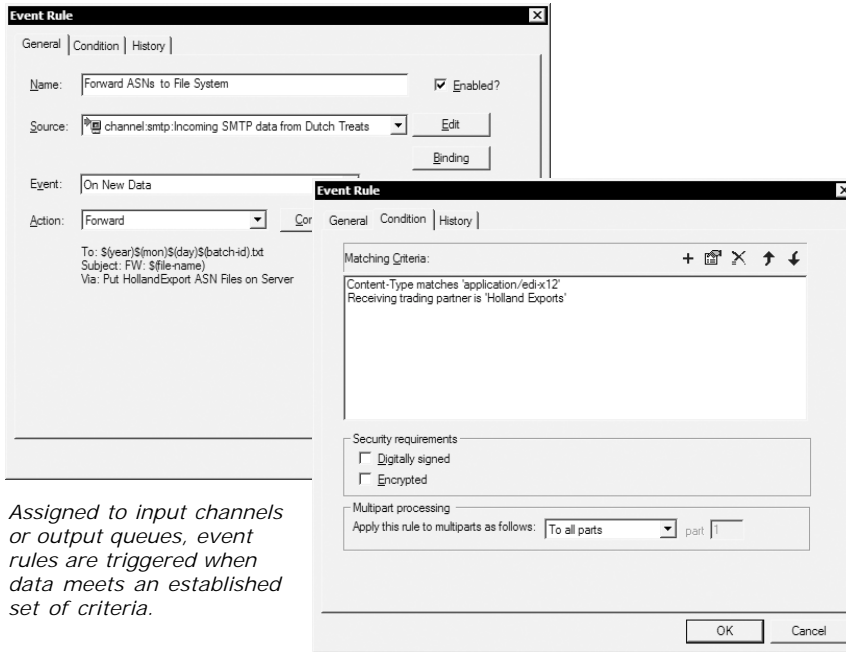
*The property pages for each input channel are uniquely suited to meet the requirements of the communications protocol.*



## Output Queues

Output queues determine where, when, and how Softshare ECS delivers data to recipients and locations outside of ECS. As with input channels, you can configure as many output queues as necessary for your operations. A single output queue could be used for more than one trading partner if the partners' communications parameters are the same.

*Each output queue has several property pages including a Scheduling page. In most cases, you will want to deliver data as soon as it is queued; however, if necessary, you can set a delivery schedule.*



*Assigned to input channels or output queues, event rules are triggered when data meets an established set of criteria.*

## Event-Driven Processing

Softshare ECS employs event rules, which are user-defined actions that determine how data is processed. Triggered in real time, event rules can forward data to output queues, send e-mail messages to other users or pagers upon data arrival, or run custom commands and scripts against incoming data. If Softshare's translation application, Softshare Delta, is installed, event rules can also pass data to Delta for translation and integration with your back-end systems.

## Security

Softshare ECS supports many key aspects of security including access control, authentication, identification verification, privacy, session security, and non-repudiation.

### Access Control

Your e-commerce service is critical to your enterprise's operations and controlling access to it is of paramount importance. ECS allows per-user access to utilities via predefined roles for administrators, power users, standard users, and restricted (read-only) users, giving you total control over who has access to your data.

### Authentication and Identity Verification

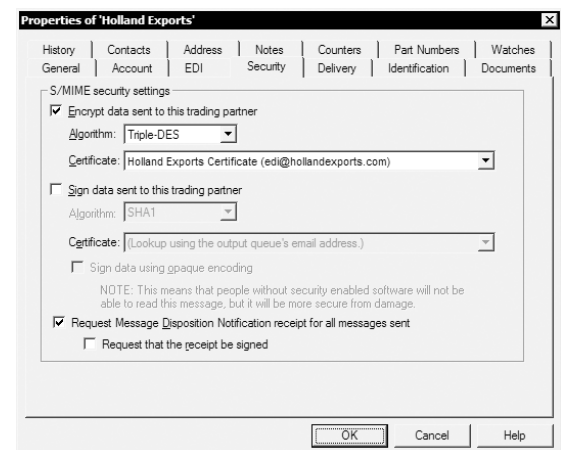
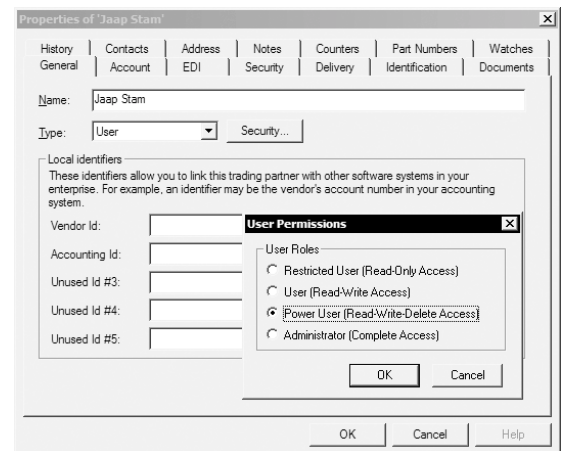
ECS monitors and enforces the identity of your data at a number of authentication levels: login, MIME headers, X.509 certificates, and the data itself. You have the power to enforce compliance and agreement at any or all of these levels. By authenticating the data before it is processed, you can prevent invalid data from entering your system.

### Privacy

By supporting the IETF AS1, AS2, and AS3 specifications along with SSL/TLS session-level security for FTP and HTTP, ECS provides many methods for securing your transmissions.

### Data Integrity

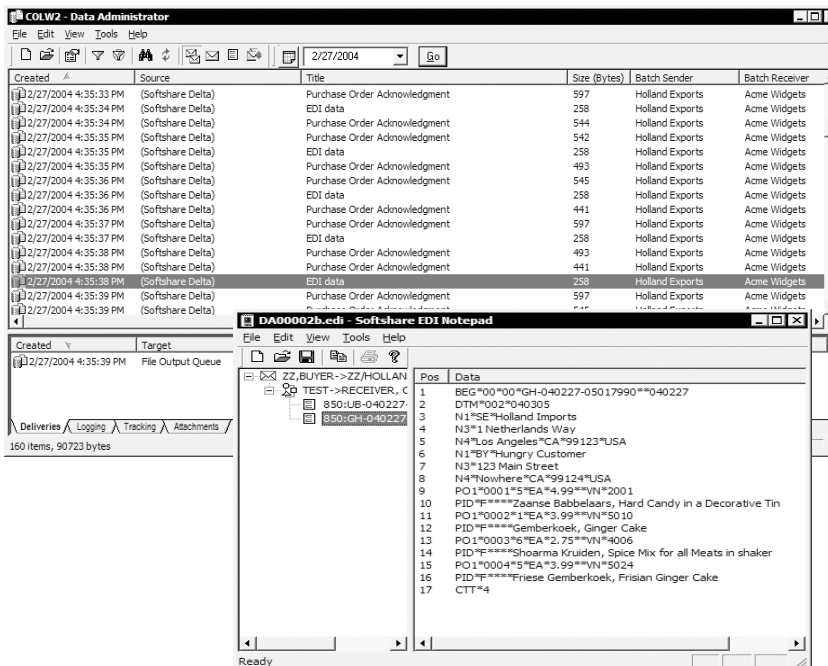
You can prevent tampering or damage to your data by leveraging ECS' support for digital signatures. In addition, ECS handles the sending and receipt of Message Disposition Notifications to ensure non-repudiation of receipt.



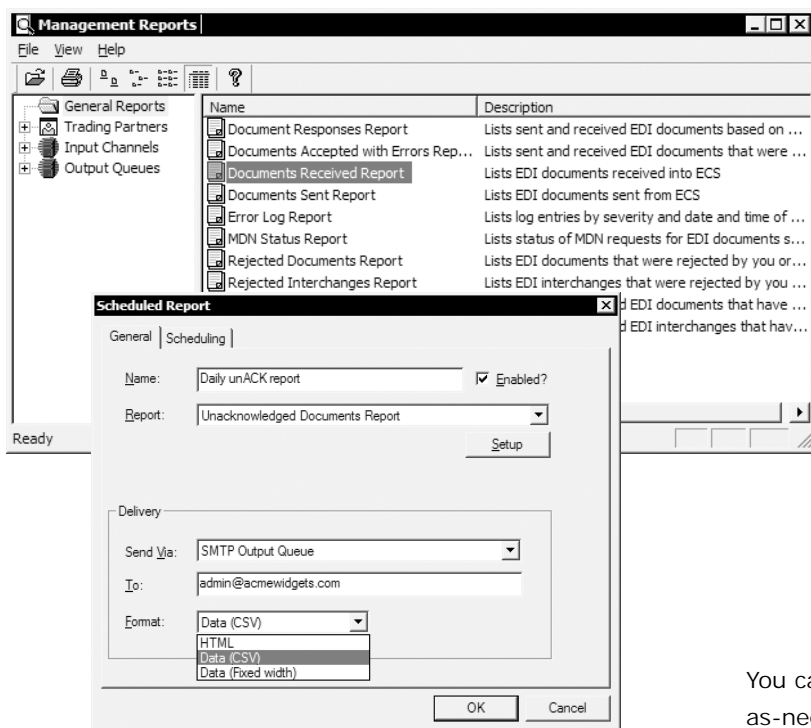
## Central Data Management

All data that passes through Softshare ECS is stored in the ECS data repository. You can view, copy, restage, or delete this data using the Data Administrator utility that ships with ECS.

For your convenience, the Data Administrator lets you filter data in the ECS repository by a number of criteria—used alone or in combination—including retrieval date, input channel, output queue, and delivery status. In addition, you can filter EDI data using EDI-specific criteria such as document type, interchange control number, and sending or receiving trading partner. When ECS is used in conjunction with Softshare Delta, these same filter options are available for XML data.



For each batch of received data, Data Administrator's upper pane displays the batch's arrival date, retrieval method, and sending/receiving trading partners. The lower pane displays the batch's actual deliveries, log entries, tracking details, and attachments. EDI batches can be easily viewed or edited using the built-in EDI Notepad utility.



Reports can be run interactively or scheduled for e-mail delivery to a system administrator.

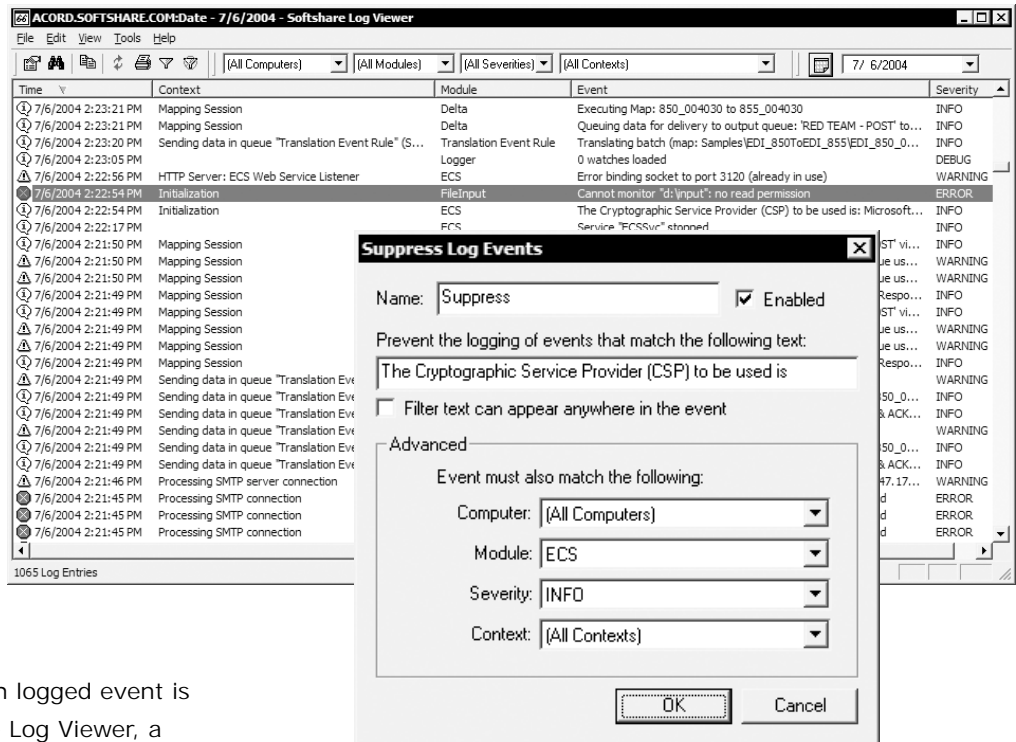
## Activity Reports

Because EDI relationships usually have strict rules governing how ANSI X12 and EDIFACT documents must be acknowledged and responded to, Softshare ECS offers a number of EDI activity reports. These reports let you quickly summarize a variety of information regarding your EDI activity such as documents that have not yet been acknowledged, documents sent and received within a particular time frame, or documents that have been rejected. Many of these same reports are also available for XML data when running Softshare Delta in conjunction with ECS.

You can manually run ECS' activity reports on an as-needed basis or you can automate them. Using the scheduled reports feature, you can schedule report execution as well as configure delivery options for the resulting output. Reports can be generated in HTML, fixed-width, or CSV formats.

## Sophisticated Error Tracking

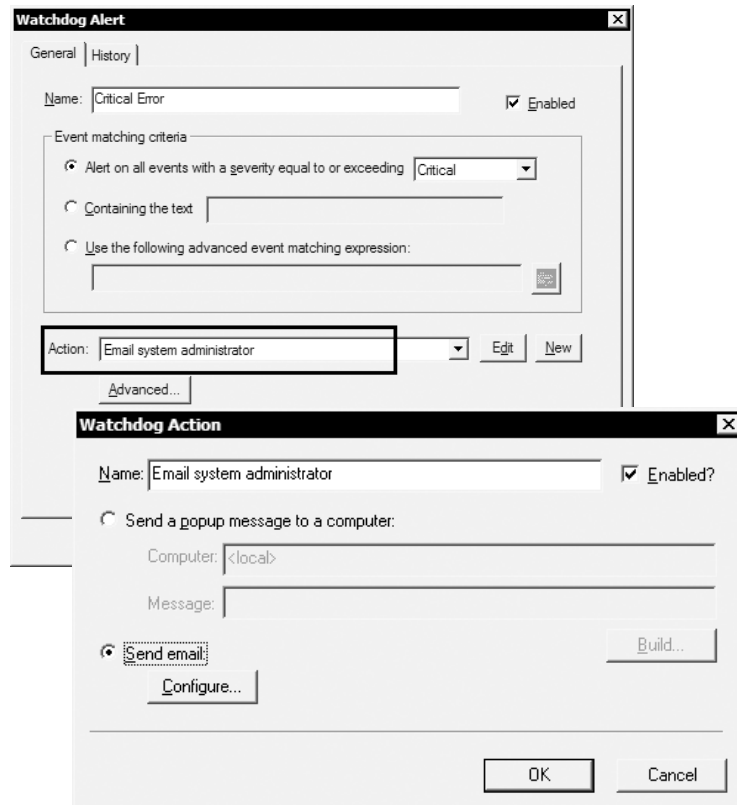
Softshare ECS diligently logs all system events that it initiates, including communications sessions, data retrievals and deliveries, command and script executions, and, when Softshare Delta is installed, data translation events. This comprehensive event logging makes it easy to track down any types of errors that might occur.



*Each log entry generated by ECS is assigned a system-defined severity code. If an entry type does not warrant logging within your environment, you can prevent it from being logged.*

## Log Viewer

A detailed description of each logged event is available for review from the Log Viewer, a utility that ships with ECS. As with Data Administrator, the data in Log Viewer can be filtered using a variety of criteria, including logging date, event type, and event severity.



## Watchdog Alerts

Some errors require immediate attention. For example, the failure of an important delivery could have a serious impact on your business operations if it goes unnoticed. To ensure that critical errors are brought to your attention in real time, you can configure ECS to automatically notify you when a particular event occurs. Called watchdog alerts, these notifications can be sent as e-mails or display as pop-up messages on designated computers.

*Watchdog alerts are triggered by information logged in the Log Viewer. Based on the watchdog alert shown here, events logged with a severity of "Critical" or higher will prompt an e-mail to the system administrator.*

## Softshare Delta

While Softshare ECS handles the communications component of Web services with its built-in HTTP support, Softshare Delta handles all the translation. Delta is a universal data translator that supports EDI, XML, flat files, databases (using OLEDB), and text documents. Data that arrives in ECS from your trading partners can be automatically handed off to Delta for translation. Similarly, Delta can hand off translated data to an ECS output queue for delivery to your trading partners.

## Web Services

When you combine the power of Softshare Delta and Softshare ECS, you get a platform capable of keeping pace with the rapidly evolving world of Web Services and business frameworks such as ebXML, BizTalk, and ACORD. Working in tandem, ECS and Delta fully support these frameworks as well as SOAP (versions 1.1 and 1.2) and SOAP with Attachments. This means you can develop all of your e-commerce solutions using a single set of mapping tools.

## Building-Block Approach

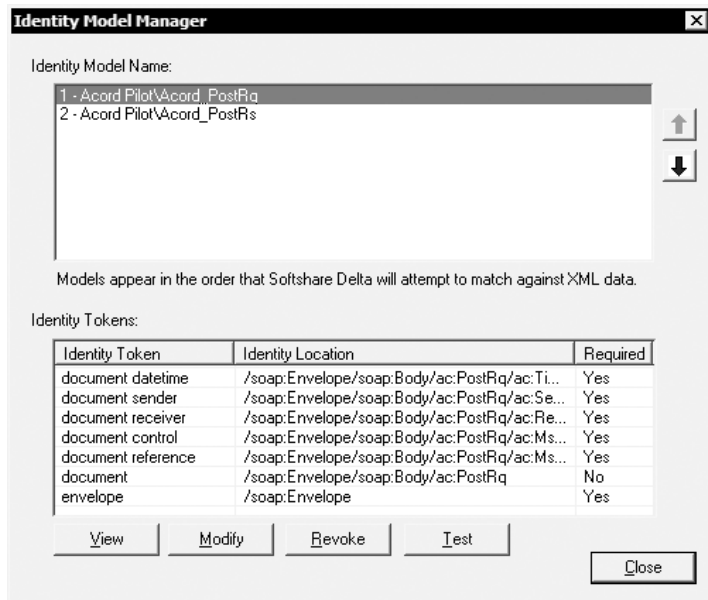
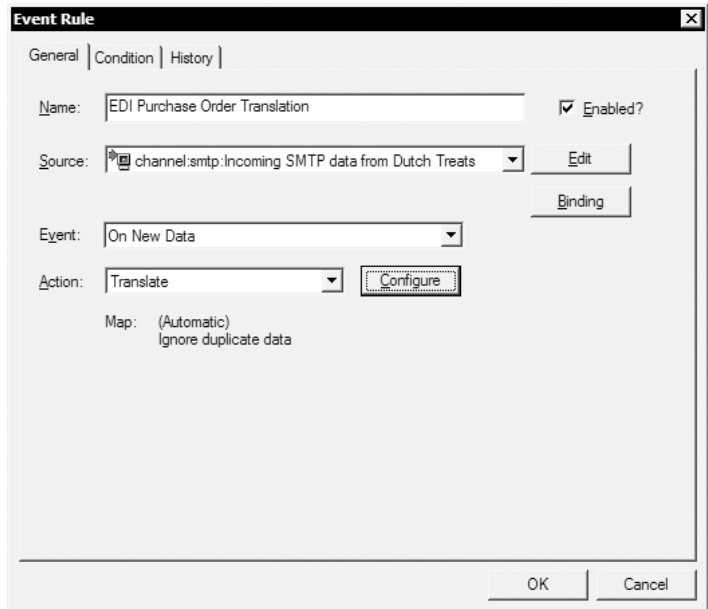
Delta also offers the concept of pipeline mapping, allowing you to tackle your data using a series of nested maps that peel away or build layers of encapsulation. This lets you reuse common data encapsulation formats such as ebXML.

## Tracking Your XML Data

In Delta, you can create identity models, which let you identify key elements in XML business documents such as the sender, receiver, and control number. These identity models are used by ECS to track XML documents as they pass through your enterprise. Identity models give business context to XML data, making XML and EDI documents equal in terms of visibility and management.

## The Complete Package

In addition to the Management Console, Data Administrator, Log Viewer, EDI Notepad, and Management Report utilities, Softshare ECS ships with several other helpful utilities that facilitate your daily operations. For example, Trading Partner Manager offers a convenient way to store important information about your users and trading partners. The built-in Archiver and Archive Viewer utilities help you manage your database size while the ECS Status utility provides real-time insight into the operations of ECS. Together, these utilities give you the tools to efficiently and securely connect your enterprise to your entire business community.



## System Requirements

### Softshare ECS Server System Requirements

Component	Minimum
Computer	Pentium PC (500 MHz required; 1 GHz recommended).
Memory	512 MB of RAM required; 1 GB recommended.
Hard Disk Space	100 MB of available hard-disk space (20 MB for Softshare ECS, 20 MB for Softshare Delta if installed in conjunction with ECS, and at least 60 MB for the Microsoft SQL Server database). Additional hard disk space will be required as the ECS database grows.
Operating System	Microsoft Windows 2000 (Service Pack 1 or higher), Windows XP Professional, Windows 2003, or Windows NT Server version 4.0 (Service Pack 4 or higher).
Additional Software	Microsoft SQL Server 7.0 or 2000. Microsoft Internet Explorer 5.0 or higher.
Internet Connection	Full-time connection to the Internet via a dedicated data access line.

### Softshare ECS Client System Requirements

Component	Minimum
Computer	Pentium PC (200 MHz or higher) with a network connection to the ECS server.
Memory	256 MB of RAM.
Hard Disk Space	30 MB of available hard-disk space.
Operating System	Microsoft Windows 98, XP, 2000, 2003, or NT 4.0.
Additional Software	Microsoft SQL Server 7.0 or 2000 client access license required for each machine on which utilities are installed. Microsoft Internet Explorer 5.0 or higher.



Softshare and Softshare Delta are registered trademarks of Softshare. All other company and product names referenced herein are registered trademarks or trademarks of their respective owners.

Please Contact: Sitcur

7916 Melrose Avenue, Suite 2  
Los Angeles, California 90046

ph: 800-642-3204

fx: 323-653-8024

[www.sitcur.com](http://www.sitcur.com) [info@sitcur.com](mailto:info@sitcur.com)