



Softshare **Athena**[®]

Web-based electronic commerce

*Softshare Athena
means no software
to install or network
to connect to!*

It's no coincidence that Softshare named its Web-based EDI solution after Athena, the Greek goddess of industry and trade. Developed for companies with low EDI volume, Softshare Athena encourages e-commerce throughout all tiers of business by offering an economical alternative to traditional EDI software and network services.

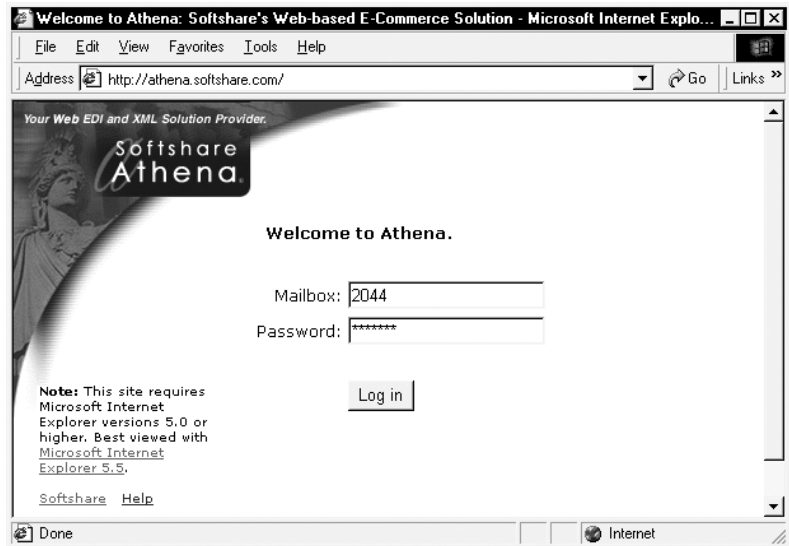
And like Athena who, according to Greek mythology, entered the world fully grown, you will be fully EDI capable in a matter of minutes after opening a Softshare Athena account. Requiring nothing more than an Internet provider and browser, Softshare Athena provides everything you need to exchange EDI documents with your trading partner(s).

Athena has also been called the goddess of reason, intelligence, and wisdom. A tough act to follow, but you'll find that Softshare Athena lives up to its namesake.

Softshare Athena. Easy, Affordable E-Commerce.

Instant Access

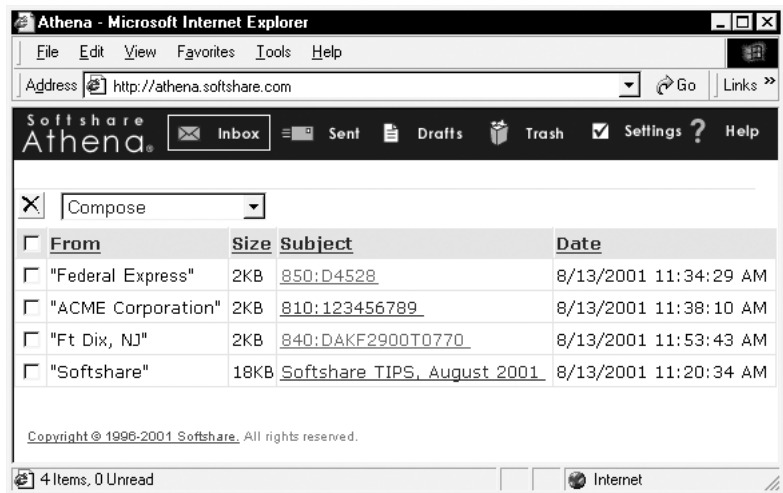
Because Softshare Athena is a Web-based service, you can access your Athena account from any computer with a browser and Internet access. As long as you have your Softshare mailbox number and password on hand, it doesn't matter if you're logging in from the office, your home computer, or even from the road.



You can access your Athena account from any computer that has Microsoft Internet Explorer (version 5.0 or later) or Netscape (version 6.2 or later) and an ISP (Internet Service Provider).

User-Friendly Interface

After you log in, Softshare Athena presents you with the contents of your inbox so that you can quickly view new messages. In addition, Athena organizes your sent, draft, and discarded documents into separate folders, letting you easily manage your EDI activities.



Navigating your way through Athena's folders is as easy as clicking an icon!

Having trouble convincing your smaller trading partners to embrace EDI? Contact Softshare to discuss how a custom Athena solution will benefit you and your trading partners.

Easy-to-Use Templates

For each trading partner that you exchange EDI documents with, Softshare Athena features a custom template, called a trading partner kit. Athena's trading partner kits comprise your trading partners' EDI requirements. When you create or respond to an EDI document in Athena, the appropriate kit is invoked, prompting you for the exact information required by that trading partner.

The screenshot shows two overlapping browser windows. The background window is titled 'Athena - Microsoft Internet Explorer' and displays the Athena web interface. The foreground window is titled 'Federal Express Supplier Invoice - Microsoft Internet Explorer' and shows a form for creating an invoice. The form is titled 'FedEx Federal Express Supplier Invoice' and contains the following fields:

- Invoice Information:**
 - Type of Invoice: Convenience Order (dropdown)
 - Invoice Number: D4528
 - Invoice Date: 09/13/2001
 - FedEx Cost Center: 127890
 - Division Identifier: FedEx Express (dropdown)
- Vendor Information:**
 - Vendor Name: PAPERS PLUS
 - Vendor Number: 222154234
 - FedEx Employee Name: JEANETTE HICKS
 - Employee Number: 239842398
- Line Item Information:**
 - Select All / Clear All buttons
 - Include Line Item 1:
 - Line: 1
 - Quantity: 1
 - Unit of Measure: Each (dropdown)
 - Price: 22
 - Vendor Part Number: 0687
 - Reference Information: Add Reference Information

At the bottom of the form are buttons for 'Save', 'Preview', and 'Send'. The 'Compose' menu is open in the Athena window, showing the 'Send' button.

To create an EDI document in Athena, simply fill in the template's fields and click the Send button. It's that easy!

Instant Document Notification

With Softshare Athena's optional Mailbox Messenger service, you'll receive notification of document arrivals via the e-mail address of your choice. Mailbox Messenger ensures that you always know when an important document is—or isn't—waiting for you.

With Softshare Athena, you can meet all your trading partners' EDI requirements for as little as \$300 a year!

XML Too

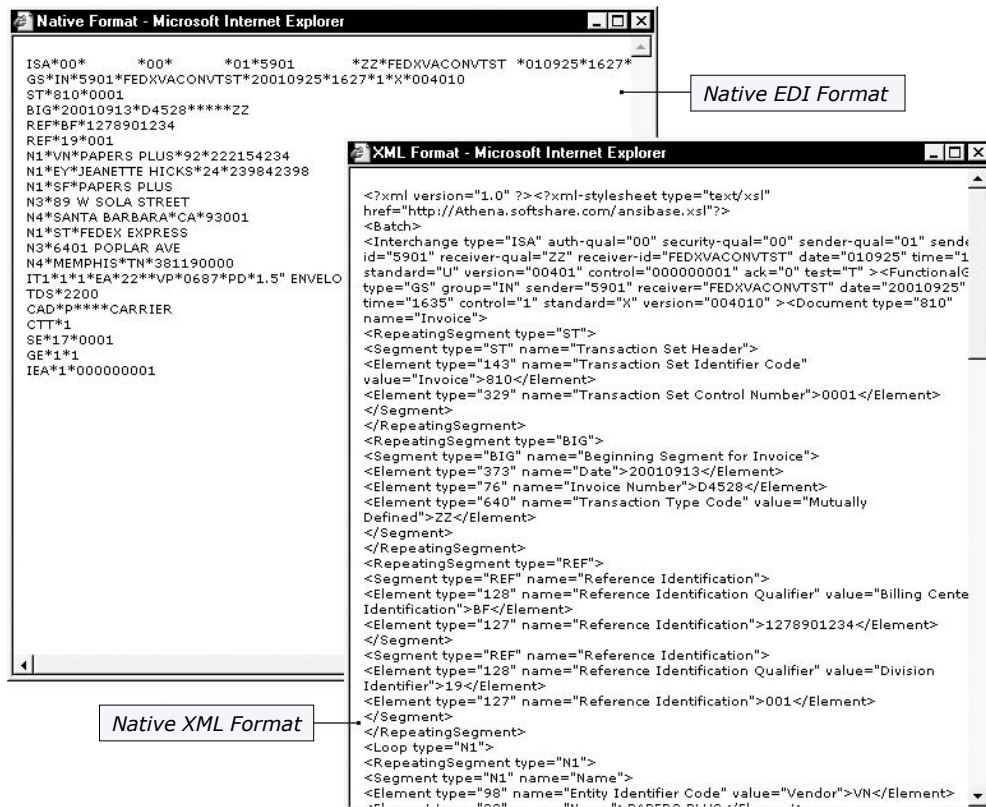
XML is no problem for Softshare Athena. Whether you are exchanging EDI or XML documents, Athena's functionality is the same—seamless.

EDI for Government Contractors

Softshare Athena also supports the exchange of EDI documents such as RFQs and quotations with the federal government. Call Softshare's Government Information Services department at 805-882-2570 for more information on our government contractor programs.

System Requirements

All you need to access Softshare Athena is an ISP (Internet Service Provider) and Web browser. Any ISP is fine, but for your Web browser, you must use Microsoft Internet Explorer® (version 5.0 or later) or Netscape® (version 6.2 or later).



Athena displays your documents in an attractive, easy-to-ready HTML format. However, you can also view them in their native EDI or XML formats.



Softshare, Softshare Athena, Softshare Delta, Softshare ECS, and Softshare Vista are registered trademarks of Softshare. All other company and product names referenced herein are registered trademarks or trademarks of their respective owners.

Please Contact: Sitcur

7916 Melrose Avenue, Suite 2
Los Angeles, California 90046

ph: 800-642-3204

fx: 323-653-8024

www.sitcur.com info@sitcur.com